



InControl Tools 95 Help

[Click here](#) if you're unfamiliar with Windows95 Help navigation and procedures.



Getting started

[Introduction to InControl Tools 95:](#)

[The Setup Wizard](#)

[The Monitor Wizard](#)

[Step-by-step quick start instructions.](#)



Popup menus

[How to use and modify InControl Tools 95's dual background menu system.](#)



Hot keys

[Instantly access display features and perform tasks by binding them to hot keys.](#)



Solutions/support

[Common questions and answers:](#)

[Diamond on the Net: Direct Help-to-Internet Connections](#)

[How to contact Diamond Multimedia Systems.](#)

Copyright © 1995 Diamond Multimedia Systems, Inc.

InControl Tools is a trademark of Diamond Multimedia Systems, Inc. All other trade names referenced in this document are the service mark, trademark, or registered trademark of their respective manufacturers.



InControl Tools 95 features

InControl Tools 95 provides a set of easy-access display and desktop utilities that help you maintain a picture perfect environment for work or pleasure.

With InControl Tools 95 you can:

- Use a popup menu to instantly switch desktop and viewport resolutions and zoom in and out on your viewport.



Center windows and message boxes to the viewport or desktop.



Control other display management features--screen saver, fast scroll, pan lock, even your hot keys and popup menus--with menu on/off switches.



Adjust your system's audio volume with a handy popup slider bar.



Add or remove items from your left- or right-button popup menus.

Enjoy. And don't forget to [let us know what you think.](#)

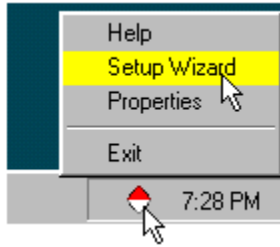
{button ,AL('contacts')} Related topics




Using the Setup Wizard

The Setup Wizard guides you through the complete InControl Tools customization process.

It is run when you install InControl Tools for the first time, but you can run it again any time by clicking the InControl Tools tray icon and choosing Setup Wizard.



Selecting the Setup Wizard from the tray icon

To use the Setup Wizard now,  click this button.

Walking with the Wizard

Setup Wizard screens explain each step of the customization process. During each step, the Display Properties dialog opens to the appropriate property sheet.

As the Wizard explains each control, the control blinks and is highlighted on the property sheet. You can then make any changes to the control, as explained by the Wizard.

At any time you can move to the Next step, go Back, or Cancel the process.

{button ,AL(^wizards')} Related topics



The Monitor Wizard

If your monitor is not on the list of standard Monitor types for Windows 95, you can use the Monitor Wizard to help you determine the capabilities of your monitor. To use the Monitor Wizard, you will want to bring up the list of monitor manufacturers and models, and then select the "(User Defined monitor types)" Manufacturer and the "User defined monitor(InControl Tools 95)" model.

The results of the tests run by the Monitor Wizard are used by InControl Tools for dynamic Desktop and Viewport switching features.

Using the Wizard

If you have your monitor manual handy, you can use it to select the recommended refresh rates while Monitor Wizard runs. We recommend that you only choose "Yes" to the Wizard's inquiries when they match the settings recommended by your monitor manual.

Choosing a test series

The Monitor Wizard offers three ways to test your monitor:



Minimal automatically runs a series of tests in all modes at a minimal refresh rate of 60Hz. This selection is appropriate for low-end monitors or if previous attempts at determining capabilities using the Full or Custom modes failed.



Full automatically runs a series of tests in all modes and at all available refresh rates. This selection is appropriate for high-end monitors that have a wide range of known capabilities.



Custom lets you choose what modes and refresh rates to test. This selection is appropriate when your monitor manual states the exact capabilities and limits for your display.

After choosing a test series type, the Monitor Wizard moves to a final pre-testing screen where existing capabilities (from previous tests) are listed.

If you chose Custom testing, you can use check boxes to select modes and refresh rates to test, or clear any existing test modes before clicking the Begin Testing button.

If you chose Minimal or Full testing and no existing capabilities are listed, Begin Testing proceeds to run the complete test as ordered. If existing capabilities are listed, you can either clear them all and proceed with full retesting by clicking the Begin Testing button, or retest existing capabilities.

As each test setting is displayed, a brief message appears to ask if the current display appears normal. If it does (or if you know from your manual that your monitor supports the setting), click Yes. If the display is abnormal or unstable in any way, or if you know from your manual that your monitor does not support the setting, either click No or wait a few seconds for the screen to readjust.

When Monitor Wizard completes the tests, the confirmed capabilities are listed.

After running the Monitor Wizard, we recommend that you restart your computer to confirm that the confirmed default (optimal) mode works. You should then use InControl Tools' Display and Viewport switching features to check other available combinations.

Note: If you change monitors and your new monitor is not on the list of Windows95 standard displays (that is, if it isn't listed in the "Change Display Type" list in the Display Properties dialog), you can rerun the Monitor Wizard to set up the new monitor to work with InControl Tools. The wizard is stored in your Diamond/InControl Tools 95 installation directory. Its file name is DMMONWIZ.EXE.



Switching to the User Defined Monitor type

Before continuing with the Monitor Wizard, you need to switch to Windows' User Defined Monitor type.

Here's how to make the switch:

- 1 Click your right mouse button anywhere on the Windows background. The Windows desktop menu appears.
- 2 Choose Properties. The Display Properties dialog appears. (Shortcut: Click the button at the top of this topic.)
- 3 Click the Settings tab.
- 4 Click the Change Display Type button. The Advanced Display Properties dialog appears.
- 5 Click the Change button. The Select Device dialog appears.
- 6 Choose the Show All Devices radio button at the bottom of the dialog.
- 7 Scroll through the Manufacturers list until you see User Defined Monitor, then select that item.
- 8 Click OK to dismiss the Show All Devices dialog, then Apply in the Advanced Display Properties dialog, and Apply in the Display Properties dialog.

You can now proceed with the Monitor Wizard.

{button ,AL(^wizards')} Related topics



Quick start instructions

When you install InControl Tools 95, a [tray icon](#) is added to your Windows95 desktop and several new options are added to your [Display Properties dialog](#).

Many of the new features available to you are activated immediately after installing InControl Tools and restarting Windows. You can then modify or toggle any feature on or off, either through the Display Properties dialog or directly from your [enhanced desktop \(right button\) menu](#).

To start using InControl Tools immediately after installation and restart:

▶ Click your right mouse button on the Windows desktop. Your enhanced desktop menu appears. Note that this is the same Windows95 "right-click" menu that normally appears, but with several new items listed above the standard items. These new items are your InControl Tools enhancements. Check all features and submenus to review the default settings.



Click your left mouse button on the Windows desktop. Your popup start menu appears. Note that this is the same menu that appears when you click the Start menu. Now, however, it's also available as a "floating" popup menu.



[Click here](#) or click the button at the top of this topic to open the Display Properties dialog. If you're familiar with the dialog, you'll note that it now contains new property sheets ("tabs"). The new sheets--Popup Menus, Shortcuts and Information--are added by InControl Tools. Also note that the Settings property sheet contains advanced display area and viewport area options.

You're now ready to use or customize all of these new features (such as adding hot key shortcuts).

For detailed customization instructions, [click here](#) or click the button below.

{button ,AL('howto')} How-to instructions



How to...

(Click the items below for step-by-step instructions.)



[Enable your popup start menu...](#)



[Disable your popup start menu...](#)



[Enable your enhanced desktop menu...](#)



[Disable your enhanced desktop menu...](#)



[Assign InControl features to hot keys...](#)

{button ,AL(^quickstart')} Quick start instructions

How to enable your popup start menu

(If the Display Properties dialog is already open, go to step 3)

- 1 Click your right mouse button anywhere on the Windows background. The Windows desktop menu appears.
- 2 Choose Properties. The Display Properties dialog appears. (Shortcut: Click the button at the top of this topic.)
- 3 Click the Popup Menus tab.
- 4 Click the Start Menu check box. An "X" appears in the box.
- 5 If you're finished making changes, click Apply, then OK to close the Display Properties dialog. If you want to make other changes, click the button below for a list of other instruction sets.

{button ,AL('howto')} Other how-to instructions

How to disable your popup start menu

(If the Display Properties dialog is already open, go to step 3)

- 1 Click your right mouse button anywhere on the Windows background. The Windows desktop menu appears.
- 2 Choose Properties. The Display Properties dialog appears. (Shortcut: Click the button at the top of this topic.)
- 3 Click the Popup Menus tab.
- 4 Click the Start Menu check box to clear it.
- 5 If you're finished making changes, click Apply, then OK to close the Display Properties dialog. If you want to make other changes, click the button below for a list of other instruction sets.

{button ,AL('howto')} Other how-to instructions

How to enable your enhanced desktop menu

(If the Display Properties dialog is already open, go to step 3)

- 1 Click your right mouse button anywhere on the Windows background. The Windows desktop menu appears.
- 2 Choose Properties. The Display Properties dialog appears. (Shortcut: Click the button at the top of this topic.)
- 3 Click the Popup Menus tab.
- 4 Click the Customize Popup Menu check box. An "X" appears in the box.
- 5 Choose an item from the Available Menu Items list.
- 6 Click Add to add the item to your Windows popup menu.
- 7 Repeat the previous two steps for all other features you want to add to your popup menu.
- 8 If you're finished making changes, click Apply, then OK to close the Display Properties dialog. If you want to make other changes, click the button below for a list of other instruction sets.

{button ,AL('howto')} Other how-to instructions

How to disable your enhanced desktop menu

(If the Display Properties dialog is already open, go to step 3)

- 1 Click your right mouse button anywhere on the Windows background. The Windows desktop menu appears.
- 2 Choose Properties. The Display Properties dialog appears. (Shortcut: Click the button at the top of this topic.)
- 3 Click the Popup Menus tab.
- 4 Click the Customize Popup Menu check box to clear it.
- 5 Choose an item from the Available Menu Items list.
- 6 Click Add to add the item to your Windows popup menu.
- 7 Repeat the previous two steps for all other features you want to add to your popup menu.
- 8 If you're finished making changes, click Apply, then OK to close the Display Properties dialog. If you want to make other changes, click the button below for a list of other instruction sets.

{button ,AL('howto')} Other how-to instructions

How to assign InControl features to hot keys

(If the Display Properties dialog is already open, go to step 3)

- 1 Click your right mouse button anywhere on the Windows background. The Windows desktop menu appears.
- 2 Choose Properties. The Display Properties dialog appears. (Shortcut: Click the button at the top of this topic.)
- 3 Click the Shortcuts tab.
- 4 Click the arrow on the Shortcut action box to see a dropdown list of available InControl features.
- 5 Click the name of the feature you want to assign to a hot key.
- 6 Click the Shortcut key box (so that the cursor appears in it).
- 7 Press the key or key combination you want to use to activate the feature. For example, if you want the feature to be activated whenever you press the Ctrl, Alt and X keys at the same time, press all of those keys now. When you do, the combination appears in the Shortcut key box. At the same time, the binding, or assignment, appears in the Shortcut bindings list above.
Add any other assignments now. If you change your mind on any of them, just select the binding you want to remove from the Shortcut bindings list, then click Remove binding.
- 8 If you're finished making changes, click Apply, then OK to close the Display Properties dialog. If you want to make other changes, click the button below for a list of other instruction sets.

{button ,AL('howto')} Other how-to instructions



About InControl Tools' popup menus

While InControl Tools is running with its popup menu features enabled, menus appear whenever you click your left or right mouse buttons on the Windows background.

The	The
start	enha
men	nced
u	desk
appea	top
rs	men
when	u
you	appe
click	ars
your	whe
left	n
mous	you
e	click
butto	your
n.	right
	mou
	se
	butto
	n.

{button ,AL('howto:popups')} Related topics



The popup start menu

The popup start menu is an InControl Tools option that lets you open a menu when you click your left mouse button on the Windows background. It's the same menu you see when you click the Start button on the Windows95 taskbar. The menu is enabled when InControl Tools is installed. After installation it can be switched off and on any time. For start menu access and customization instructions, [click here](#).

To toggle the popup start menu on or off:



Open the enhanced desktop menu by clicking your right mouse button on the Windows background, then choose Start menu.

or



Click the Start menu check box in the Display Properties dialog. If the box is checked, the menu is on; if cleared, the menu is off. Be sure to click Apply or OK before closing the dialog.

Note: Even if you currently have the popup start menu switched on, it is automatically turned off if you close the InControl Tools tray icon. It is restored to its previous state when you run the InControl Tools Video Applet or restart Windows.

{button ,AL('popups;hotkeys;solutions')} Related topics



The enhanced desktop menu

The enhanced desktop menu is an InControl Tools option that adds a number of items to Windows' built-in "right-click menu." This menu normally appears when you click your right mouse button on the Windows background. For enhanced desktop menu customization instructions, [click here](#).

For descriptions of menu items, [click here](#).

The menu is enabled when InControl Tools is installed. After installation it can be switched off and on any time.

To toggle the enhanced desktop menu on or off:



Open the enhanced desktop menu by clicking your right mouse button on the Windows background, then choose Popup Menu.

or



Click the Right Mouse Button Popup menu check box in the Display Properties dialog. If the box is checked, the menu is on; if cleared, the menu is off. Be sure to click Apply or OK before closing the dialog.

Note: Even if you currently have the enhanced desktop menu switched on, it is automatically turned off if you close the InControl Tools tray icon. It is restored to its previous state when you run the InControl Tools Video Applet or restart Windows.

{button ,AL(^popups;hotkeys;solutions')} Related topics



About hot keys

InControl hot keys let you assign key combinations to tasks in Windows95. You can then press these combinations any time from anywhere in Windows to open programs, open documents, or perform InControl display management tasks.

No hot keys are assigned when InControl Tools is installed. For step-by-step instructions in assigning hot keys, [click here](#).

{button ,AL('howto')} Related topics



Solutions

After installing InControl Tools and Windows restarts, Windows tells me that I should run a check for new hardware. But I didn't change my hardware, so why does it ask?

InControl Tools installs a new Windows95 display driver. In most cases, the new driver is part of a new display card installation package. In either case, Windows senses a change in the display environment, and asks you if you want to check for new hardware.

If you did install a new card when you installed InControl Tools, you should follow the hardware-check procedure when the query appears. If you only installed or reinstalled the InControl Tools software, you don't have to do the hardware check.

Note: If you had a higher resolution display setup before installing the software, you will probably want to restore your screen to its previous settings when Windows restarts (it restarts to the default VGA 640 X 480, 16-color state). To do that, open go to your Control Panel window, click on the Display applet to open the Display Properties dialog, choose the Settings tab, and make your selections.

I changed display cards, installed the new driver for the new card, and now InControl Tools doesn't work.

Why?


InControl Tools works only with certain Windows95-compatible Diamond drivers. If you install an unsupported driver, your Display Properties dialog in Control Panel reverts to its default state and all InControl Tools features are removed.

{button ,AL('quickstart;howto;popups;hotkeys;contacts')} Related topics



How to contact us

We'd like to hear what you think about InControl Tools. Pass along any comments or suggestions to our main office or to any of the online services listed below. You can also contact us for sales support, technical assistance, driver updates and general information.

If you're connected to the Internet,  [click here](#) for a list of links that provide instant access to our www, ftp and other Internet services.

Main phone number: 408-325-7000

Fax: 408-325-7070

Product support: 408-325-7100

24-Hour Fax On Demand service: 1-800-380-0030

America Online keyword: DIAMOND

CompuServe: GO DMNDONLINE or
GO GRAPHBVEN) [75300,3673]

Microsoft Network: Find DIAMOND

Internet home page: <http://www.diamondmm.com>

Internet file site: <ftp.diamondmm.com>

Internet index page: [Diamond Internet Index](#)

Diamond product information: 1-800-468-5846

BBS: 408-325-7080 (to 14.4 baud)
or 408-325-7175 (to 28.8 baud)



Diamond on the Net

If you're [connected to the Internet](#), click any of the links below to browse our Internet services or click on the globe itself to view an index page in your default Internet web browser. If you have any trouble connecting from these links, [click here for help](#).



[Diamond Index page](#) Quick access to our range of web services.

[Diamond Home page](#) One of the most popular sites on the web. The headquarters for all Diamond services on the web.

[Diamond FTP site](#) Loaded with driver updates, information files and more.

Feedback

Though we can't reply personally to all email we receive, you can use the links below to send us comments or suggestions concerning Diamond's Product Support services. All feedback is researched and incorporated into upcoming service bulletins. The service bulletin area is then updated weekly. So before issuing your comment or question, please check this area to see if an answer already exists.

If not, use tsfeedback@diamondmm.com for technical support issues or csfeedback@diamondmm.com for customer service issues.

{button ,AL('solutions')} Related topics

[Click here for help](#) if any of the links don't connect properly.

Tip: If you use an Internet service provider, you can use Windows95's [AutoDial](#) feature to open access to your dial-up service.



Connecting to the Internet from Help

Use the following troubleshooting checklist if you click on one of our Help-to-Internet links and the link fails or your browser doesn't appear.

Is your Internet connection running right now?

Make sure your company or personal Internet service is online right now. Open your web browser and type www.diamond.com into the URL locator at the top. If you get "URL not found" error message (or a message to that effect), then you're probably not online. If that's the case, check with your system administrator or connect to your Internet service provider and try again.

Is Microsoft Internet Explorer installed?

Windows95 offers a special feature that allows instant command-line access to most types of Internet services, such as pages on the World Wide Web (WWW), FTP (File Transfer Protocol) sites and even email. We use this feature to create the Help links that connect you to the Internet.

The feature is only available, however, if certain library files and registry settings are present. These files and settings are, at this writing, only installed in full by the Microsoft Internet Explorer web browser. You don't actually have to use the Internet Explorer as your primary web browser, but it must be installed to enable command-line Internet access.

Internet Explorer is part of the Internet package that is installed with Microsoft Plus! for Windows95. It is also available directly from Microsoft as a standalone browser. You can get information about the Explorer and download the most recent version of it from Microsoft's home page at www.microsoft.com. It is also available at other sites on the Internet and from online services such as CompuServe and America Online.

Is the HTM extension associated with a browser?

A couple of our Help-to-Internet links launch your browser directly via an association with the HTM file type. For information on checking or creating a file type association, [click here](#) or search the WINDOWS.HLP file under the keyphrase "file types".

{button ,AL(^ solutions')} Related topics

Click this to add a program to the start menu (left button menu).

Click this to remove a program from your popup start menu (left button menu).

This button opens Windows Explorer to allow you to perform further modifications on your popup start menu (left button menu).

Check this box to enable the Add, Remove and Advanced buttons. These buttons open windows that let you customize your popup start menu (left button menu).

The controls in this group let you customize your enhanced desktop menu (right-button menu). First check the Start Menu checkbox to enable the buttons, then Add or Remove programs from your menu. The Advanced button lets you use Windows Explorer to customize your menu.

The controls in this group let you customize your popup start menu (left button menu). First, check the Customize checkbox to enable the listboxes, then click the buttons below them to Add or Remove the menu items you select.

Check this box to enable the listboxes and buttons below. These buttons and boxes let you add or remove items from your popup start menu (left button menu).

A list of the items you can add to your enhanced desktop your enhanced desktop menu (right-button menu). Items with a plus [+] sign have additional items. To see them, double-click the item. To see more of the list, use the scroll bars. To add an item, an item from a group or an entire item group to the menu, select the item, then click the Add button.

A list of the items you can remove from your enhanced desktop menu (right-button menu). Items with a plus [+] sign have additional items. To see them, double-click the item. If the list extends beyond the box, use the scroll bars to see more of it. To remove an item, an item from a group or an entire item group from the menu, select the item, then click the Remove button.

Click this button to add items to your enhanced desktop menu (right-button menu). Use the Available Menu Items listbox to select the items you want to add.

Click this button to remove items from your enhanced desktop menu (right-button menu). Use the Current Menu Items listbox to select items for removal.

A list of all current shortcut key assignments. To remove an assigned shortcut, select it, then click the Remove Binding button at the bottom of the property sheet. If the list extends beyond the box, use the scroll bar to see more of it.

A dropdown listbox containing all available actions that can be assigned to shortcut keys. Click the arrow to open the box, then use the scroll bar to scan the list and select an action you want to bind to a shortcut. To assign a shortcut to the selected action, place your cursor in the Shortcut Key window, press a key or key combination, then click the Add Binding button. The new shortcut assignment appears in the Shortcut Bindings list above.

Icon representing the currently selected action.

This is where you bind a shortcut to the action displayed in the Shortcut Action window. To create the binding, place your cursor in this window and press any key or key combination. When you click the Add Binding button, the new shortcut assignment appears in the Shortcut Bindings list at the top of the property sheet.

Click this button to bind the action shown in the Shortcut Action window to the key or key combination shown in the Shortcut Key window. The new assignment appears in the Shortcut Bindings list at the top of the property sheet.

Click this button to remove a shortcut key assignment. Use the Shortcut Bindings list at the top of the property sheet to select the assignment you want to remove.

A list of all current shortcut key assignments. To remove an assigned shortcut, select it, then click the Remove Binding button at the bottom of the property sheet. If the list extends beyond the box, use the scroll bar to see more of it.

A dropdown listbox containing all available actions that can be assigned to shortcut keys. Click the arrow to open the box, then use the scroll bar to scan the list and select an action you want to bind to a shortcut. To assign a shortcut to the selected action, place your cursor in the Shortcut Key window, press a key or key combination, then click the Add Binding button. The new shortcut assignment appears in the Shortcut Bindings list above.

This is where you bind a shortcut to the action displayed in the Shortcut Action window. To create the binding, place your cursor in this window and press any key or key combination. When you click the Add Binding button, the new shortcut assignment appears in the Shortcut Bindings list at the top of the property sheet.

Shows how the current settings will look on your screen.

Use this slider to increase or decrease the size of your "virtual" screen (the total amount of available display workspace). It must be set equal to or higher than Viewport size. If set higher, your available workspace increases, though you won't be able to see all of it at once. To see more of it, move your mouse past the edge of the screen in any direction.

Use this slider to increase or decrease the size of your "virtual" screen (the total amount of available display workspace). It must be set equal to or higher than Viewport size. If set higher, your available workspace increases, though you won't be able to see all of it at once. To see more of it, move your mouse past the edge of the screen in any direction.

Use this slider to increase or decrease the size of your "virtual" screen (the total amount of available display workspace). It must be set equal to or higher than Viewport size. If set higher, your available workspace increases, though you won't be able to see all of it at once. To see more of it, move your mouse past the edge of the screen in any direction.

Use this slider to increase or decrease the size of your "virtual" screen (the total amount of available display workspace). It must be set equal to or higher than Viewport size. If set higher, your available workspace increases, though you won't be able to see all of it at once. To see more of it, move your mouse past the edge of the screen in any direction.

Use this slider to increase or decrease the size of your "virtual" screen (the total amount of available display workspace). It must be set equal to or higher than Viewport size. If set higher, your available workspace increases, though you won't be able to see all of it at once. To see more of it, move your mouse past the edge of the screen in any direction.

Increases or decreases the amount of information that appears on your screen. Your monitor and display adapter determine whether you can change this setting. This is sometimes referred to as "resolution."

[Click this to install the software for a new display adapter or monitor.](#)

Click this button to remove a shortcut key assignment. Use the Shortcut Bindings list at the top of the property sheet to select the assignment you want to remove.

Changes the size of the text that Windows displays. If this setting is unavailable, you cannot change the font size.

Lists the color palettes that your display adapter and monitor support.



Actions. A dropdown list of InControl Tools functions that you can assign to the current key or mouse combination in the Display Properties dialog. Actions include Zoom In, Zoom Out, on-the-fly resolution switching, on/off switches for dynamic features, access to InControl's Popup Menu, and the launching of other Windows programs. After choosing an Action, you can bind it to the current key/mouse combination by clicking the Add Hot Key button.

Bindings. List of all current Hot Key assignments. You can use these assignments to perform the listed tasks from anywhere in Windows as long as InControl Tools is active.

Popup start menu. An InControl Tools option that lets you open a menu when you click your left mouse button on the Windows background. It's the same menu you see when you click the Start button on your Windows taskbar. For instructions on customizing your start menu, [click here](#). To find out how to switch the "popup" version on and off, [click here](#).

Enhanced desktop menu. An InControl Tools option that adds a number of items to Windows' built-in "right-click menu." When enabled, the menu appears when you click your right mouse button on the Windows background. To see the menu with all options listed in their default state, [click here](#). For instructions on customizing your enhanced desktop menu, [click here](#). To find out how to switch the menu on and off, [click here](#).

ZoomIn	Ctrl+Alt+Shift+,
ZoomOut	Ctrl+Alt+Shift+.
Switch Desktop	▶
Switch Viewport	▶
Pan Lock	▶
Maximize to...	▶
Center to...	▶
Fast Scrolling	▶
Shortcuts	▶
Popup Menu	▶
Start Menu	▶
Volume	▶
Screen Saver	▶
Arrange Icons	▶
Ling up Icons	
<u>P</u> aste	
Paste <u>S</u> hortcut	
<u>N</u> ew	▶
<u>P</u> roperties	

Zoom in. Automatically switches to the next lower screen resolution (viewport size). For example, if your current resolution is 1024 x 768, zooming in switches it to 800 x 600 (or the next lower resolution permitted by your card).

Zoom out. Automatically switches to the next higher screen resolution (viewport size). For example, if your current resolution is 800 x 600, zooming out switches it to 1024 x 768 (or the next higher resolution permitted by your card).


Switch Desktop. Switch to a different desktop size. If set to a size larger than your viewport, you can create a "virtual desktop" and pan to other areas of the desktop by moving your mouse past the edges of the screen.

Switch Viewport. Select a different viewport size. This sets the actual resolution for your display.

Pan Lock. When you create a virtual desktop, moving your mouse past the edge of the screen lets you view and use other areas of the desktop. This capability is called panning. If you want to "freeze" the currently visible portion of the virtual desktop, you can lock it into place by turning Pan Lock on. To set the lock, choose Pan Lock from the InControl Tools enhanced desktop menu, then choose On from the submenu. You can resume panning again anytime by switching Pan Lock off.

Maximize To. If you have a virtual desktop enabled, this item lets you maximize windows either to the entire desktop (the larger virtual screen) or to the viewport (the screen surface you can see at any one time).

Center To. If you have a virtual desktop enabled, this item lets you center Windows dialogs relative to the entire desktop (the larger virtual screen) or to the viewport (the screen surface you can see at any one time).

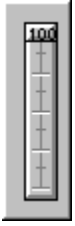
Fast Scrolling. If you have a high-powered display card, you can slow down the speed at which text or artwork is displayed when you use scroll bars.  How: From the InControl Tools enhanced desktop menu, choose Fast Scrolling, then choose Off (to slow scrolling) or On (to resume the default scrolling rate).


Shortcuts. Use this menu item to switch your hot key assignments on or off.

Popup Menu. This item lets you switch your enhanced desktop menu (this menu) on or off. When off, only the default Windows95 desktop menu appears when you click you right mouse button on the Windows background. To reactivate the enhanced menu, click the InControl Tools tray icon and choose Enable Popup.

Start Menu. This item lets you switch the popup start menu on or off. When off, you can still access the start menu in the normal manner (from the Start button).

Volume. Controls your system audio level. Use your left mouse button to drag the button on the slider up or down to increase or decrease volume. As you move it, the relative volume level is displayed on the button.



Screen Saver. If you have a screen saver active, InControl Tools lets you switch it on or off without returning to the Display Properties dialog.  How: Choose Screen Saver from the InControl Tools enhanced desktop menu, then choose On or Off from the submenu.


Arrange Icons. Contains commands for arranging icons on your desktop.

Line up Icons. Arranges icons in a grid.

Paste. Creates a desktop icon you that can be used to access the current contents of the clipboard.

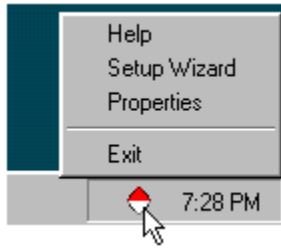
Paste Shortcut. Creates a shortcut desktop icon that can be used to access the current contents of the clipboard.

New. Group of Windows commands that let you open new documents of certain types or create new folders or shortcuts on the desktop.

Properties. Opens the Display Properties dialog, the Control Panel dialog box that lets you see and modify your current display settings. InControl Tools adds property sheets and options to the default Windows95 Display dialog. To see the dialog now, click this button: 

Background. The "wallpaper" area of your desktop on which windows and icons appear. To click on the background, click on any area that is not within a window, icon or icon label.

Tray icon. The InControl Tools icon that appears in the tray on your Windows95 taskbar. When you click the icon with your left mouse button, a menu appears to let you exit InControl Tools, open this Help file, open the Display Properties dialog box or rerun the Setup Wizard.



Monitor Wizard. If, during installation, InControl Tools 95 determines that your monitor is not on the list of standard display types for Windows95, it runs the Monitor Wizard to help you determine the capabilities of your monitor. The results of the tests run by the Monitor Wizard are used by InControl Tools for dynamic Desktop and Viewport switching features.

Setup Wizard. The Setup Wizard guides you through the complete InControl Tools customization process. It is run when you install InControl Tools for the first time, but you can run it again any time by clicking the InControl Tools tray icon and choosing Setup Wizard.

XXX. XXX

